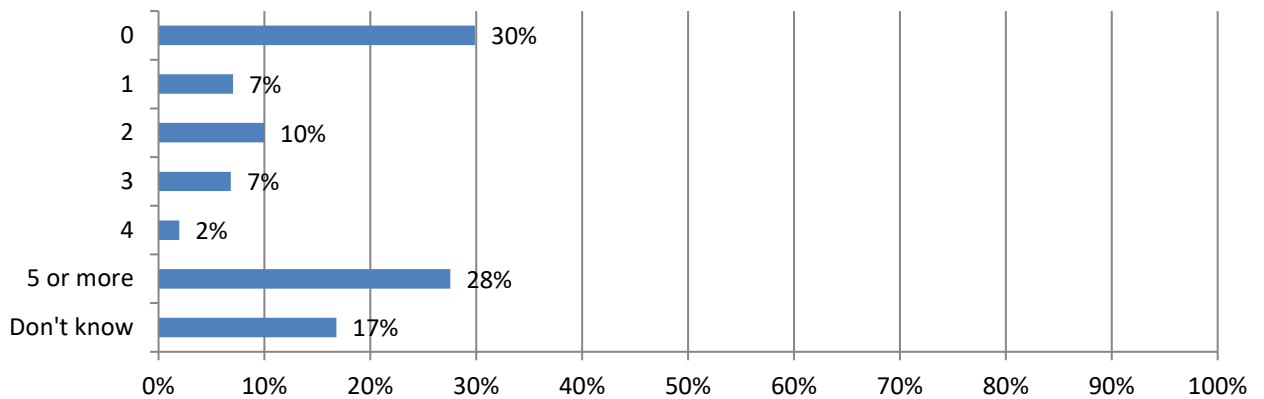




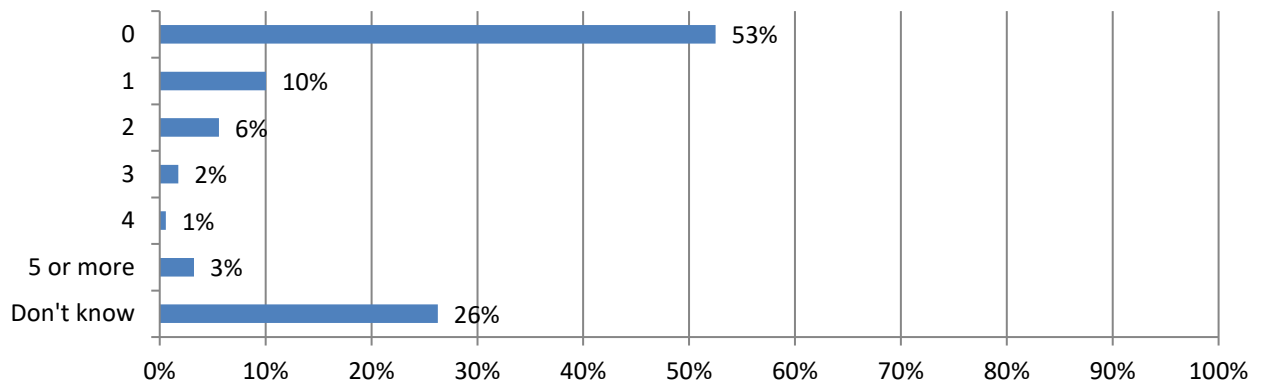
2024 Work Zone Awareness Survey Results National Results

Total 514 responses; Responses varied for some questions. Percentages are based on responses to each question and may not sum to 100 due to rounding (total specified in some questions).

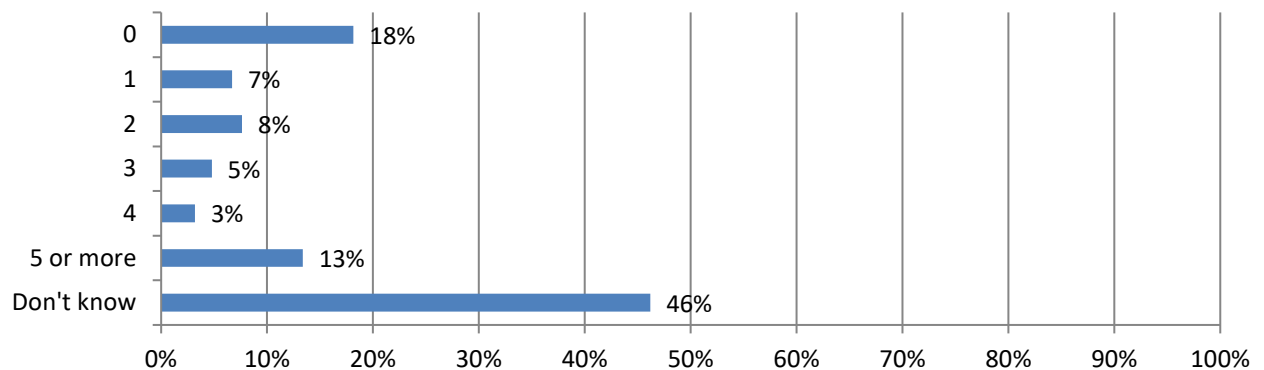
1. In the past 12 months, how many crashes involving a motor vehicle have occurred at a highway work zone where your firm operates? (512 Responses)



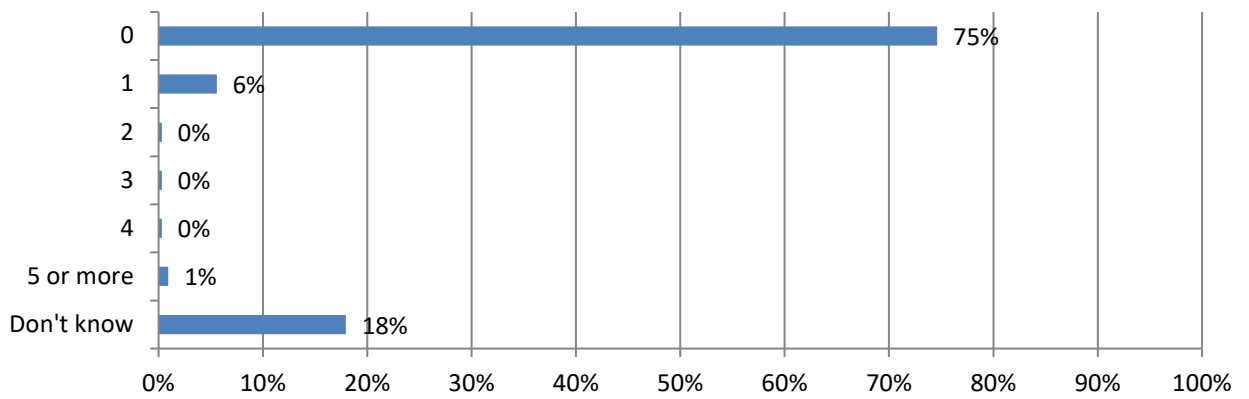
2. How many construction workers were injured in these crashes? (339 Responses)



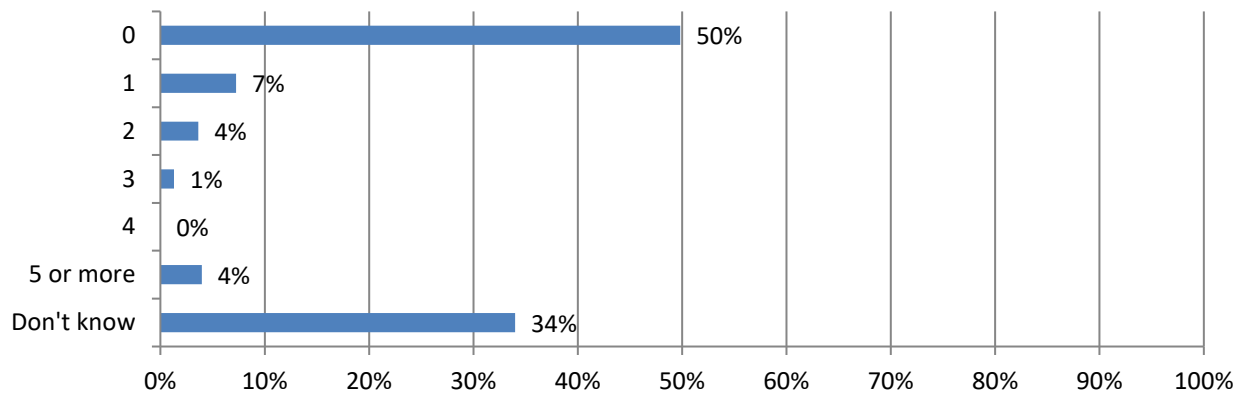
3. How many drivers or passengers were injured in these crashes? (314 Responses)



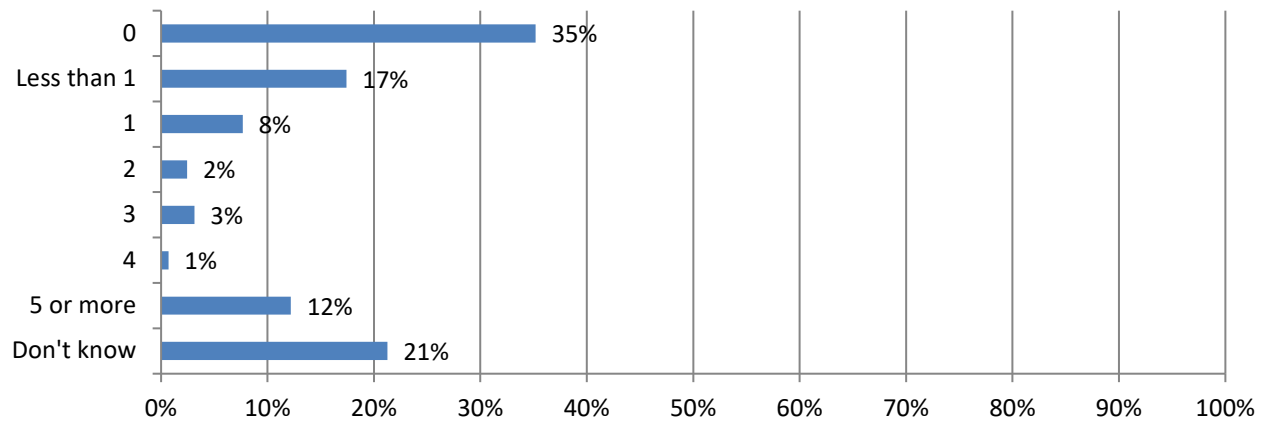
4. How many construction worker fatalities resulted from these crashes? (323 Responses)



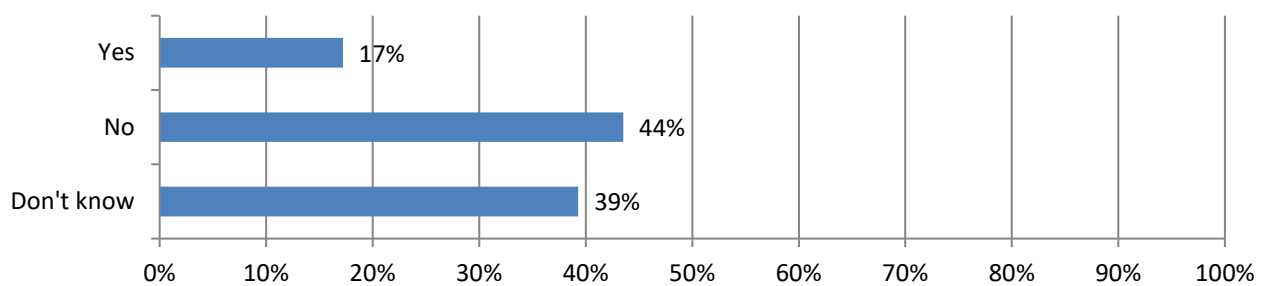
5. How many driver or passenger fatalities resulted from these crashes? (303 Responses)



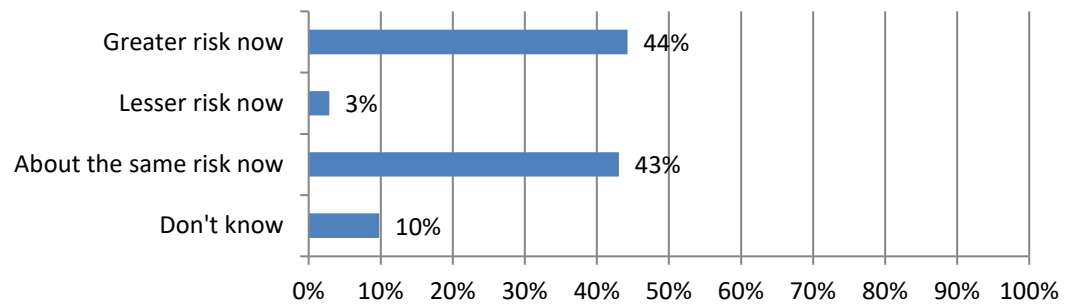
6. How many days have your firm's projects been delayed because of these crashes? (287 Responses)



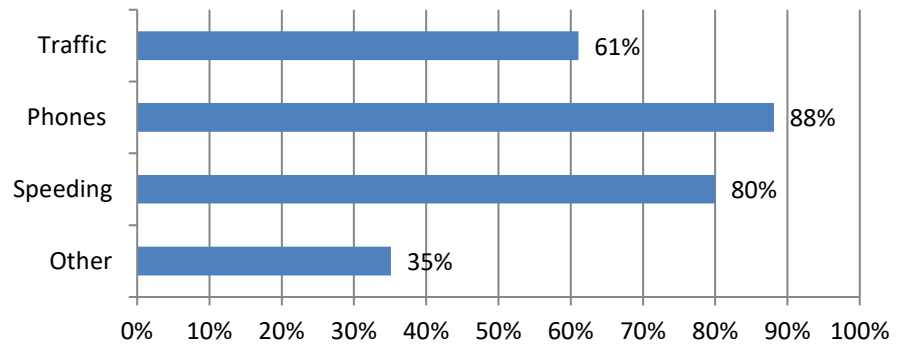
7. Have work zone crashes affected your ability to hire and attract new workers into the industry? (285 Responses)



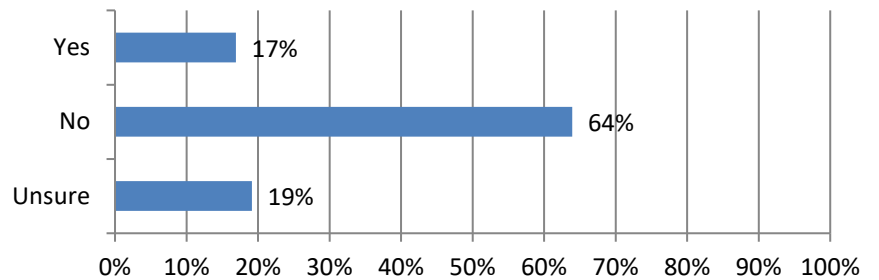
8. How much of a risk are highway work zone crashes now compared to one year ago? (418 Responses)



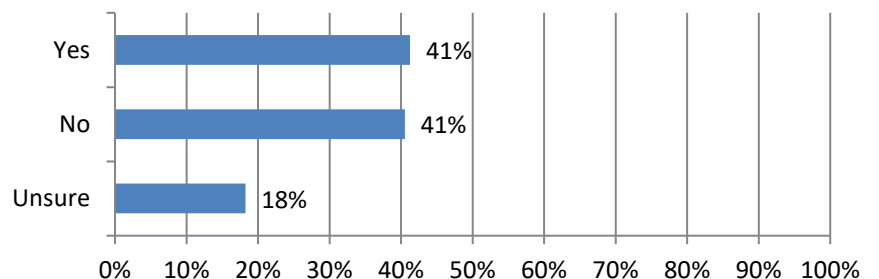
9. Why do you think highway work zone construction is more dangerous today compared to one year ago? (185 Responses)



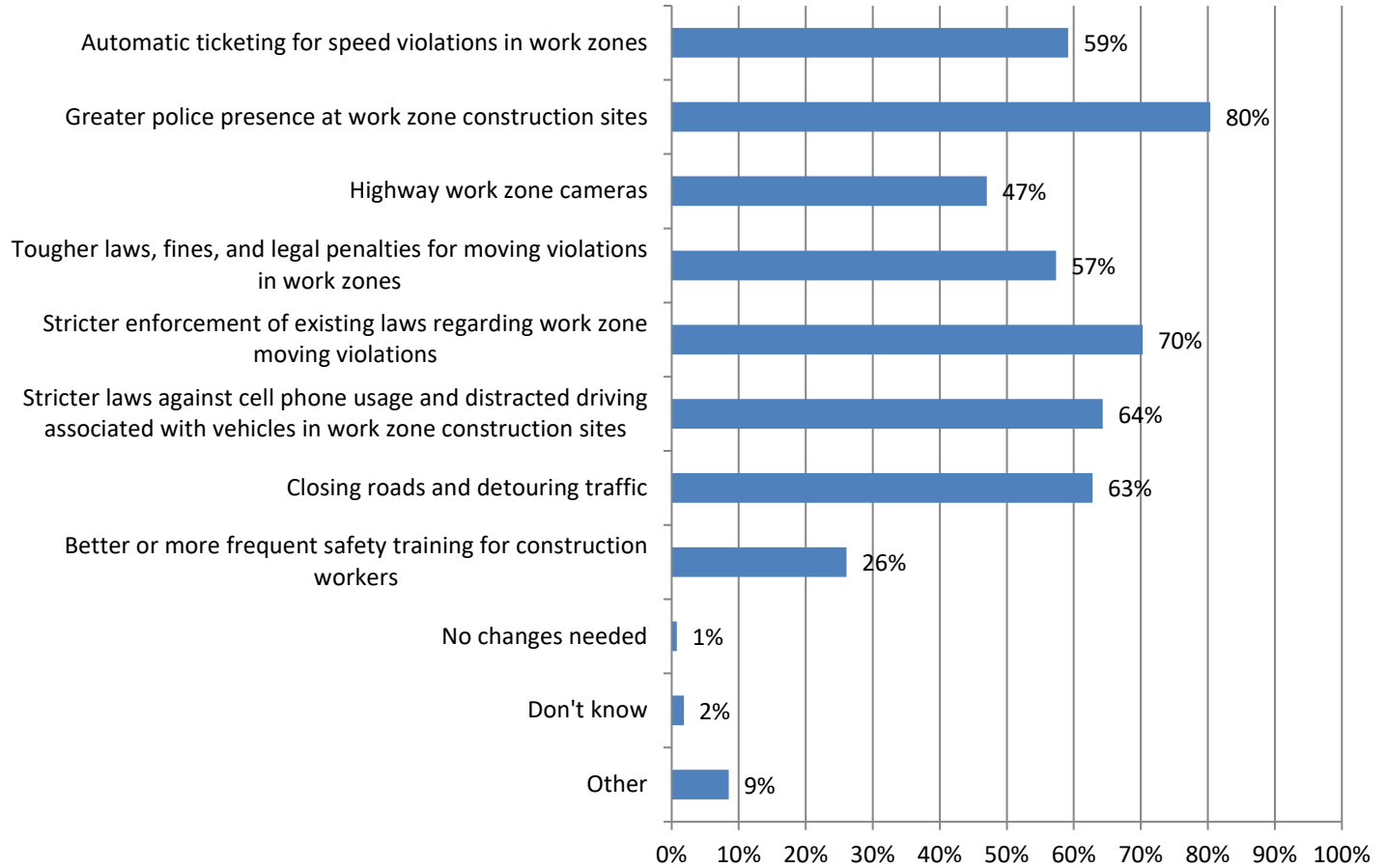
10. Are the current penalties for moving violations in highway work zones sufficient to deter unsafe driving behaviors in the states where you work? (402 Responses)



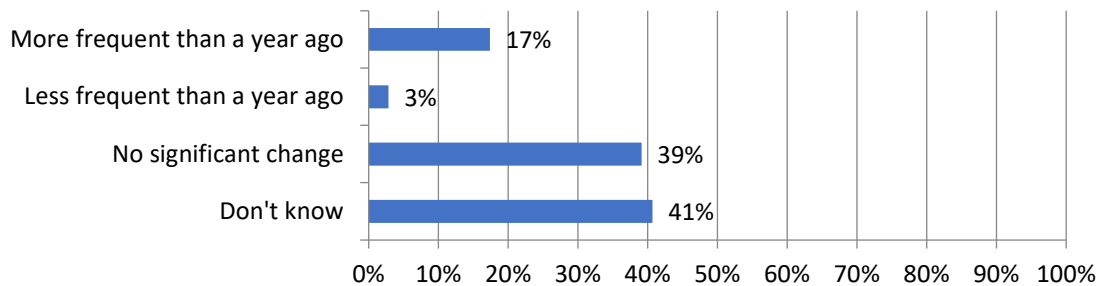
11. Are enforcement efforts – including police presence and/or the use of speeding cameras – currently helping deter unsafe driving behaviors in highway work zones in the states where you work? (395 Responses)



12. Would any of these measures help reduce the number of highway work zone crashes, injuries and/or fatalities? (387 Responses)



13. Has the frequency of work zone crashes when performing night work changed from a year ago? (386 Responses)



14. If you answered yes, what do you attribute this to? (67 Responses)

